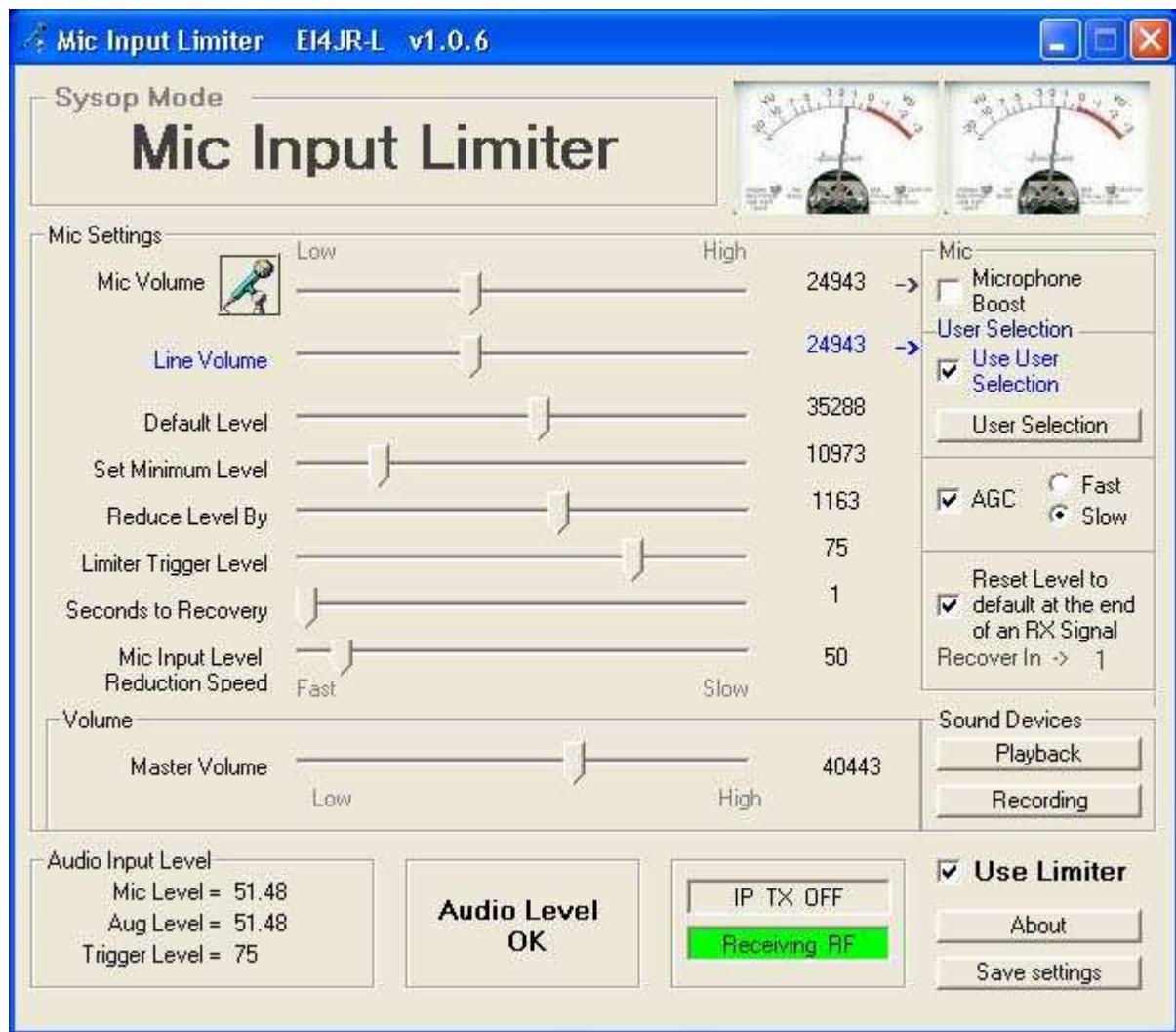




Mic Input Limiter

www.echoaddons.com





[Download Mic Input Limiter Ver 1.0.6](#)

Windows XP Application No registration need Free to use

The Mic Input Limiter is a simple to use Windows XP utility that allows the Sysop of a Repeater / Link or PC User to try and control the audio going into their node / link. It cuts down the mic gain when strong audio is used.

The program runs alongside EchoLink and the idea of the Mic Input Limiter is to reduce the Mic Level gain when an RF user / PC User is calling through your link who's audio is a little to high. The mic level will drop to a level set and recover to the original default mic level that you have set at the end of there over.

Features include left and right hand meters, Mic Gain reduction control which includes AGC, Mic default level, Mic minimum level, reduce level speed, Trigger level, Seconds to recovery, Master volume and various control boxes for boost selection.

Although it works on my systems there will be some sound cards that are not compatible with the limiter so if it doesn't work I'm sorry that there is not a lot I can do about it at this stage this is all in the experimental stage at the moment

Setting Up

There are no hard and fast rules to setting up the limiter. My setup is shown in the picture above but I'm sure that different computer and sound card systems will be different so it a case of play around with it. You might want to get the help of a normal audio level RF User and then an RF user who's audio is very strong and make the adjustment accordingly

VU Meters

The meters are just an indication that there is some audio going into the system and give a rough guide on levels.

Mic Volume

This is an indicator showing where the Mic Volume level is set. This will increase and decrease when the limiter is in operation. This slider can also be used to change the Mic Volume level manually.

User Selection

This option enables the selection of a 2nd input device to be selected and used in conjunction with the mic input. This will increase and decrease when the limiter is in operation. This slider can also be used to change the user selected device level manually.

Default Level

This is an indicator showing where the Mic Volume and User selected device default maximum level is set.

Set Minimum Level

Set this slider to the level where you do not want the Mic Volume or User selected device to drop below.

Reduce Level by

This slider will set the amount that the slider will reduce when the Mic Volume input is lowering. The higher the number the the faster the Mic level will drop.

Limiter Trigger Level

Set this level to the point that you want the Mic Volume to start reducing

Seconds to Recovery

This is the delay time set by the slider to put the Mic Volume back to the Mic Default Level

Mic Input Level Reduction Speed

This slider will enable you to set the speed of the Mic Input Level reduction

Master Volume

The master volume is set with this slider. The limiter will not affect this setting it was just put here for convenience

Tick Boxes

Recover at the end of an RX signal

When ticked the Mic Volume Input will reset the the level set by the Mic Default Level when the RF user stops transmitting. If left unchecked the level will after the Seconds to Recovery

Mic Boost

When ticked will boost the Mic Volume Input if your sound card supports this function. You may need to go into the computer sound devices advanced settings to enable this function to be activated

Use Limiter

When ticked will puts the limiter into operation

AGC

When ticked the AGC (Automatic Gain Control) will increase the Mic Volume and User Defined selection to increase in gain. Fast and slow gain can be selected.

About

Information about the author and access to the check for updates button

Save Data

This button will save all your changes to any of the sliders or tick boxes.

Exit

This button will save all your changes to any of the fields then exit the program.

Updates to the software

The program will check to see if there is any updates when started and can be updated by following the directions also by clicking in the About button and then clicking on the Check For Updates button and follow the instructions.

=====

FAQ

Will the limiter run with Vista and Windows 7

It was made to run under the Windows XP Platform. It will not work with Windows 7. All I will say is try it and if will not work simply un install the program.

Will the limiter do out going audio ?

No the limiter only changes the mic gain on strong audio users.

=====

History

Version 1.0.5

Introduction of the program

Version 1.0.6

1. AGC added. Fast and Slow
2. User selection added for 2nd input device (You will not be able to save this selection)
3. Loop back mic slider removed and replaced by User selection slider
4. Some of the tick boxes that were not really needed were removed
5. Tidy up of some code and bug fixes

I hope you find the program useful

Donations are always welcome to help with the upkeep and advancement of the Donegal Repeaters & Software

[Make A Donation](#)

Peter EI4JR



[Back To Home Page](#)

Page Updated on 16/11/2009

2 1 3 1 8 9 9